

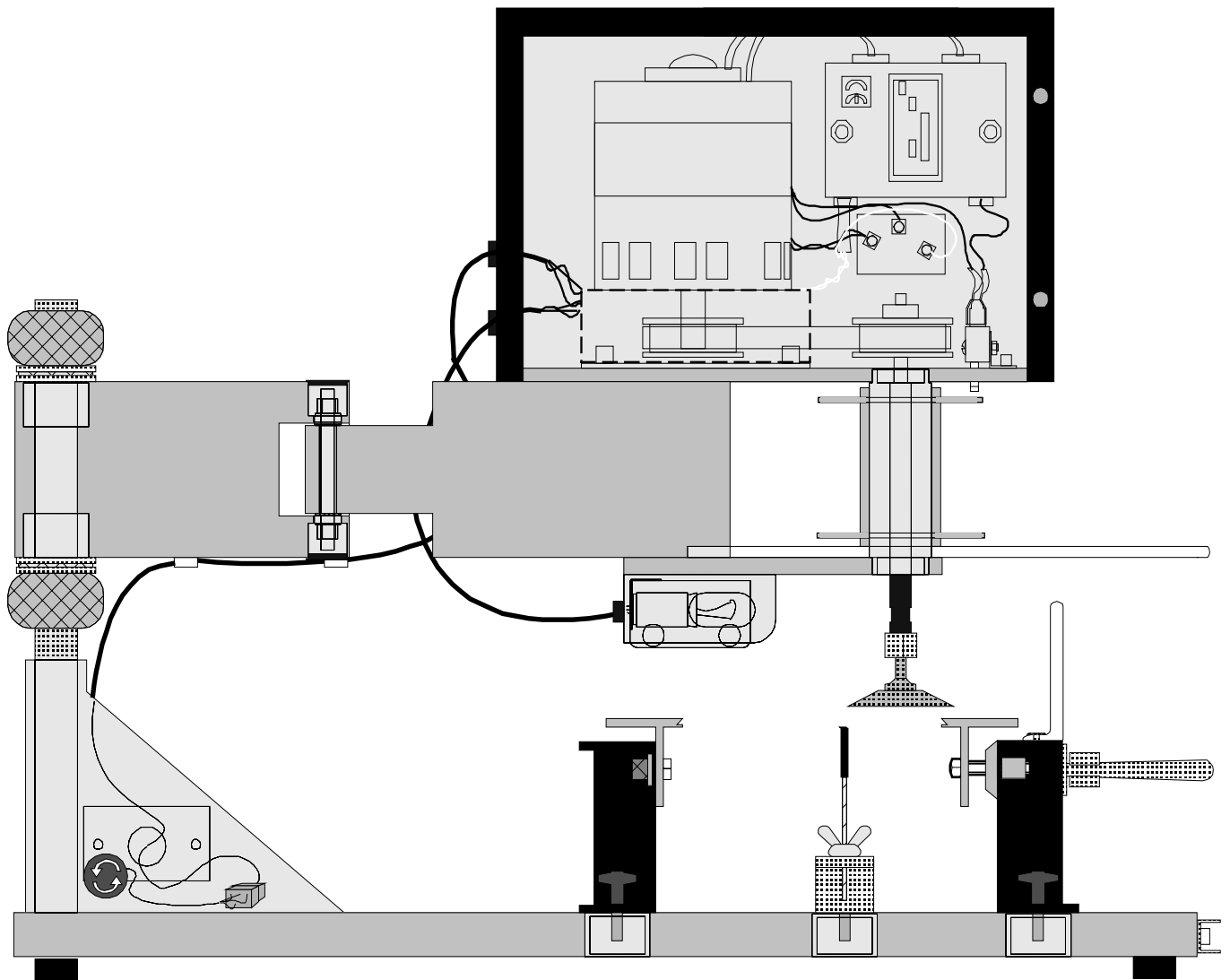
PARTS LIST

ROTO/TRIM[®], MODELS 172, 272 & 272HD

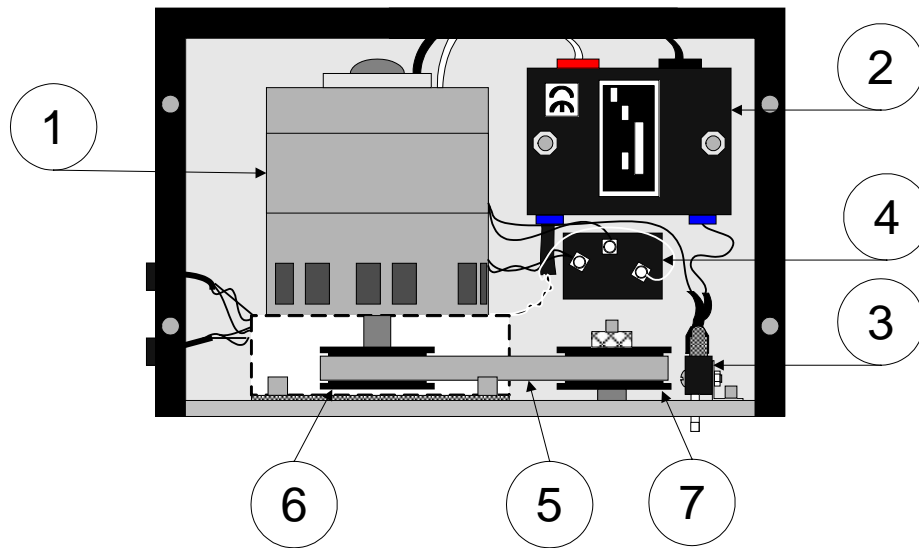
Roto Form Manufacturing Corporation



Most of the parts in the Models 272 & 272HD are common. However, the motors and drive components are different. Model 272HD parts are indicated in “red.”



Roto Trim®, Model 272

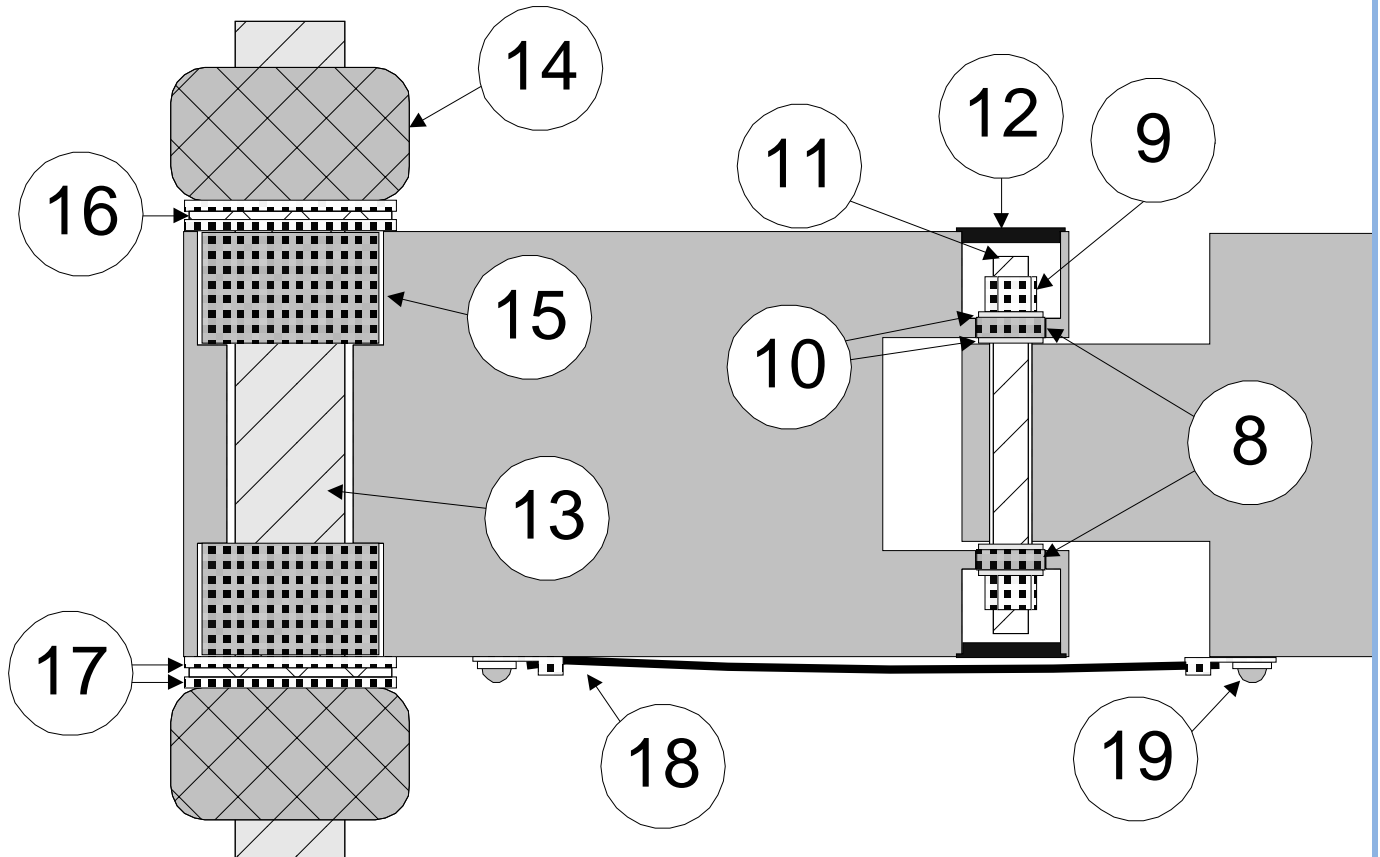


Motor, Sprockets & Electronics

ROTO TRIM, MODEL 272 & **272HD**

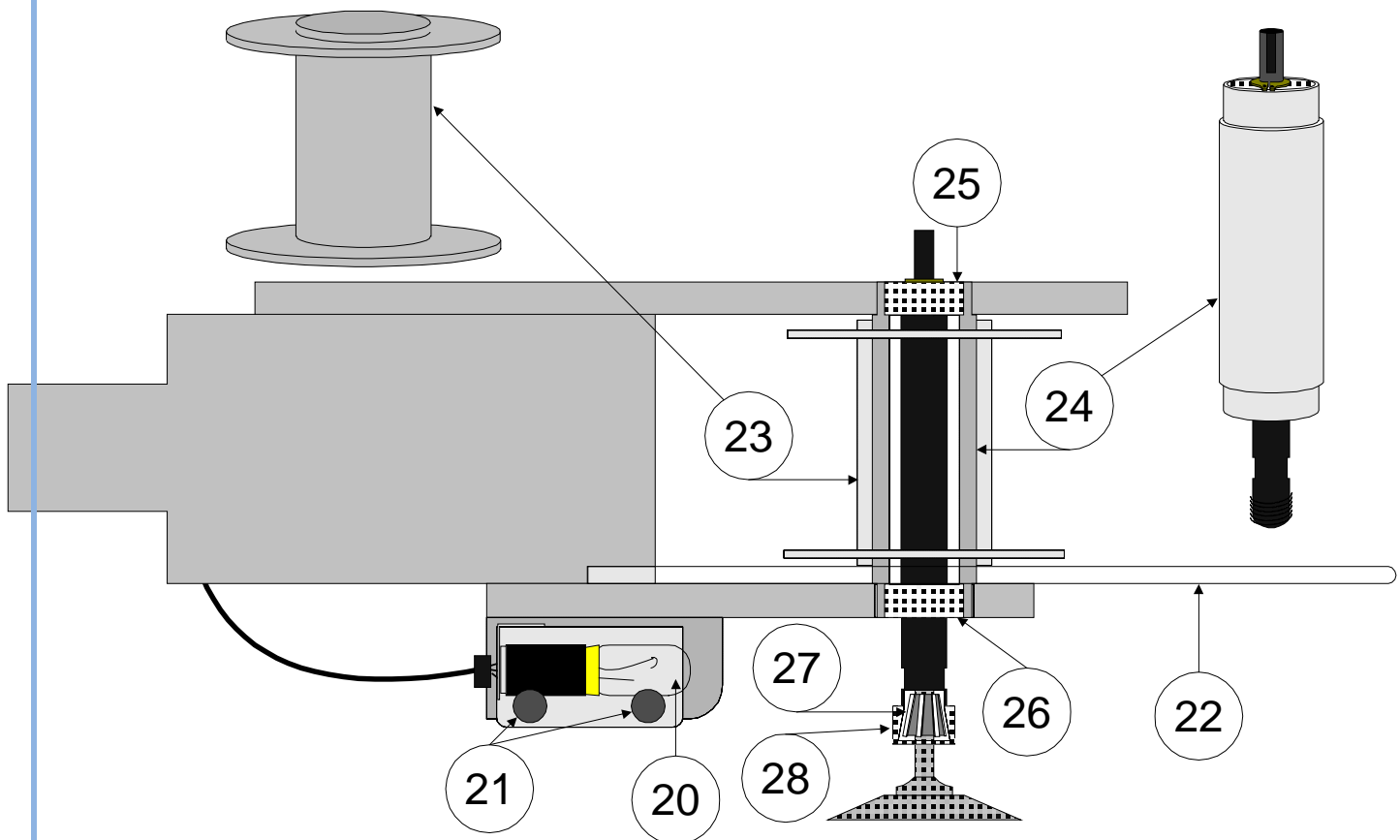
ITEM	DESCRIPTION	PART #
1	Drive Motor	172-201
	Drive Motor HD	272-201HD
	Motor Brushes (set)	172-263
	Motor Brushes (set) HD	272-263HD
2	Speed Control 120V	172-202
2	Speed Control HD	272-202HD
3	Safety Switch (motor)	172-203
4	On/Off Switch	172-248
5	Timing Belt (teeth) model 272	172-148
5	Timing Belt (teeth) Model 272HD	272-148HD
5	Timing Belt (round) model 172	172-260
6	Sprocket – Motor for 272	172-150
	Sprocket – Motor for 272HD	272-150HD
7	Sprocket - Spindle	172-147
	Sprocket – Spindle for 272HD	272-147HD
5, 6 and 7	Belt Repair Kit for 272	172-148K
	Belt Repair Kit for 272HD	272-148KHD

Arm & Upright Post



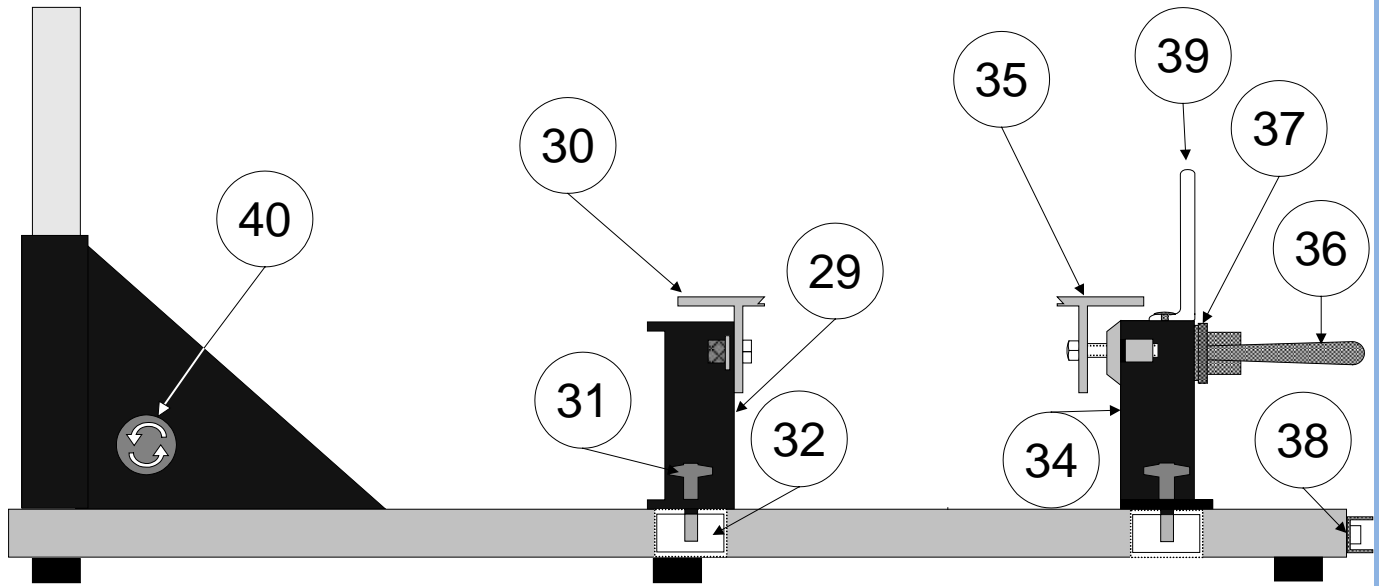
8	Elbow Bearing (2 reqd)	172-212
9	Elbow Nut (2 reqd)	172-219
10	Elbow Washer (4 reqd)	172-220
11	Elbow Shaft	172-125
12	Elbow Plug (2 reqd)	172-204
13	Upright Post	172-111
14	Knurled Adjusting Nut (2 reqd)	172-122
15	Upright Needle Bearing (2 reqd)	172-213
16	Upright Thrust Bearing (2 reqd)	172-214
17	Upright Thrust Washer (4 reqd)	172-215
18	Bunge Cord Assembly	172-1103
19	Shoulder Screws (2 reqd)	150-211

20	Lamp 120V	172-209
20	Lamp 230V	172-209B
	Lamp Holder (socket)	172-210
21	Rubber Vibration Pads (4 reqd)	172-256
22	Shield (NEW SHIELD USED)	172-905 (272-905)
	Roto-Cutter 1.5" Dia (smooth)	172-1603
	Roto-Cutter 2.0" Dia (smooth)	172-1605
	Roto-Cutter 1.5" Dia (serrated)	172-2603
23	Spindle Sleeve Assy (1reqd)	172-1602
24	Spindle Assembly (1reqd)	172-137
25	Spindle Bearing (top)	172-111
26	Spindle Bearing (bottom)	172-211 (B)
27	Spindle Flexible Chuck (1reqd)	172-270
28	Spindle Nut (stainless)	172-265



Spindle, Front Arm & Light

Base & Vise Jaw Rails



	Rubber Feet (6 reqd)	181-246
29	Rear Sliding Angle (black)	172-1606
30	Vise Jaw Rear	172-104
31	T-Bolt/Spacer (4 reqd)	181-1104
32	Sliding Nut (delrin, 6 reqd)	172-134
34	Front Sliding Angle (Black)	172-1608
35	Vise Jaw - Front	172-104
36	Handle - Vise Jaw (Assy)	172-1115
37	Thrust Washer	172-245
	Guide Pin Bushing (4 reqd)	172-106
	Guide Pin (2 reqd)	172-105
	Clamp Spring (3 reqd)	172-218
	Retaining Ring (3 reqd)	172-222
38	Safety Switch - Base	150-308
	Base Safety Switch Guard	172-612
	172 Shield - (NEW SHIELD USED)	172-901 (272-905)
39	272 Shield - (NEW SHIELD USED)	272-903 (272-905)
40	Fuse Holder	162-120
	Fuse - 5 Amp	163-121